



P R E M I U M

THE MOST COMPREHENSIVE COLLECTION OF UNPARALLELED QUALITY



WWW.PIRNAR.CO.UK



PIRNAR'S **HERITAGE**

We take pride in our heritage. From our initial steps in the family workshop onward, we are driven by a passion for creation and a commitment to excellence in design and craftsmanship, which has been passed down through generations. We continuously enhance our expertise and combine it with modern technologies. Strong roots maintain our connection to tradition, while courage and boldness push the boundaries of possibility, guiding us to new successes. With a clear vision and an innovative approach, we exceed expectations and set new milestones globally in the realm of building furnishings.





PREMIUM

UNMATCHED QUALITY, THE MOST COMPREHENSIVE
COLLECTION OF ENTRANCE DOORS WITH
COUNTLESS PERSONALIZATION OPTIONS

The Premium collection offers the most extensive selection of exceptional aluminium entrance doors, crafted in both modern and traditional styles. With numerous combinations of high-quality materials and options for personalizing equipment and accessories, they cater to a variety of residential, architectural, and personal needs and tastes of homeowners.



DOORS THAT SEAL LIKE A WALL

THE UNIQUE CARBON DOOR CONSTRUCTION CARBONCORE

The heart of every premium entrance door is its construction. CarbonCore is a unique patented carbon construction made exclusively for entrance doors. Carbon fibres are exceptionally lightweight, rigid, and several times stronger than steel. With CarbonCore profiles, we significantly minimize door warping, whether in scorching sun or the coldest winters. This construction enables the development of innovative design and functional solutions for Pirnar's entrance doors.

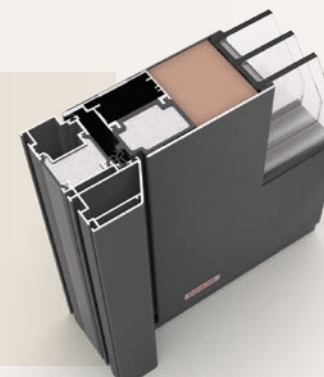
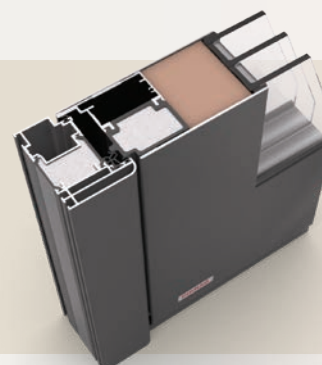
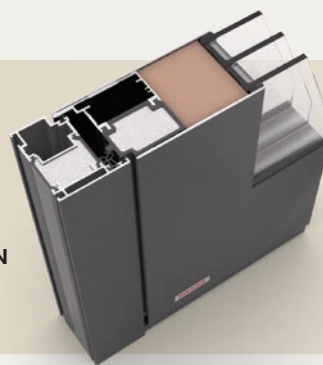


PREMIUM
CARBONCORE **LEVEL**

PREMIUM
CARBONCORE **SOFT**

PREMIUM
CARBONCORE **CONTOUR**

- ✓ RECORD-SEALING
- ✓ SUPERIOR THERMAL AND ACOUSTIC INSULATION
- ✓ EXCEPTIONAL STABILITY WITHOUT WARPING
- ✓ THE STRONGEST YET LIGHTWEIGHT CONSTRUCTION
- ✓ PRODUCT DURABILITY



Thermal transmittance	0,75 W/(m²K)	0,75 W/(m²K)	0,75 W/(m²K)
Door frame thickness	83 mm	93 mm	120 mm
Door leaf thickness	83 mm	83 mm	83 mm
Thermal glazing	Triple glazing	Triple glazing	Triple glazing



1. EXCEPTIONAL SIZES




CarbonCore allows Pimar's entrance doors to adorn magnificent villas, castles, and masterpieces of contemporary architecture. Premium models can be produced in the Grande variation, boasting an exceptional height of up to 3000 mm and a width of up to 2800 mm, along with side elements, creating an impression of stunning magnificence.

2. CONCEALED HINGES

Concealed hinges are an important aesthetic and security element on the Premium entrance doors with CarbonCore construction. The elegant black finish and alignment with the door leaf complement exceptional robustness and durability, whereby concealed hinges serve as a security bolt.

3. SEALING MAGNET WEATHERSEAL

CarbonCore features advanced sealing with Magnet WeatherSeal, giving the doors an outstanding water-tightness rating of 9A in testing laboratories. This ensures complete water-tightness, even under pressure from winds at speeds of up to 114 km/h (600 Pa). This represents a six fold higher load than what regular entrance doors can withstand.

	Water-tightness class	9A
	Water-tightness at wind speed	114 km/h 600 Pa
	Air-tightness class	4

LIVE SMARTER AND SAFER

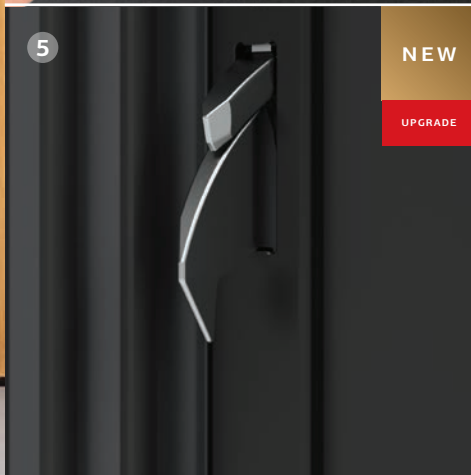
COMPLETE SAFETY AND COMFORT

Pirnar offers state-of-the-art solutions and the finest products for complete safety and comfort. You can unlock the entrance doors using the smart SecuroSmart system or the SecuroSmart Keypad in the Pirnar mobile app, as well as with a fingerprint reader. Combined with the premium locking system Armo Comfort Electro Plus, you will ensure that your home is a fortress of safety and peace.



* The RC2 security package is standardly available for single-leaf door configurations with a solid door leaf, sizes up to 1250 x 2400 mm, without toplights or sidelights. For designs with glass in the door leaf featuring sidelights, toplights, or separate sidelights, the RC2 package is available as an additional option.





1. FINGERPRINT READER

This modern and popular method of unlocking doors with a fingerprint reader ensures enhanced security and, above all, a simpler and more comfortable entry for your entire family, as it allows you to store fingerprints of multiple selected individuals simultaneously. Forget about keys and concerns.

2. SECUROSMART KEYPAD

The modern keypad allows for unlocking with various PIN codes tailored to specific living needs and unlocking with an RFID card. It features a fingerprint reader and doorbell, managed via the Pirnar mobile app.

3. SMART MANAGEMENT SECUROSMART

The smart SecuroSmart system in the Pirnar mobile app boasts advanced functionalities for easy and secure door usage. Even if you are on the other side of the world, you can easily unlock your doors.

4. CONCEALED HINGES

Concealed hinges are a crucial security element of Pirnar's entrance doors, renowned for their exceptional robustness and long-term durability. They not only provide an elegant appearance but also function as a security bolt that effectively prevents the lifting of the door or its forcible removal from the frame.

5. ARMO COMFORT ELECTRO LOCK AND ARMO COMFORT ELECTRO PLUS

The premium multi-point lock allows for motorized unlocking without a key and automatic mechanical locking. It is compatible with remote unlocking systems and fingerprint reader. The door with this lock achieves burglar resistance RC2 according to EN 1627 for RC. The Armo Comfort Electro Plus lock offers a fully motorized solution for secure, comfortable, and modern use of entrance doors. It operates without manual locking and allows controlled access with advanced safety features.

FOR ADDITIONAL INFORMATION ON SECURITY AND LOCKING SYSTEMS, TURN TO PAGE 78



SMART
LUX

UPGRADE

UNIQUE ON THE MARKET

CREATING AMBIANCE WITH ELEGANT LIGHTING

Pirnar's solutions for creating a comfortable atmosphere facilitate the management of lighting for entrance doors at thresholds, pull handles, or lever handles. With the smart SmartLux system in the Pirnar mobile app, you can adjust the intensity, colour, temperature, and timing of the lighting. Manual control of the light remains an option, allowing you to modify the intensity, colour, and temperature of the illumination.

SMARTLUX LIGHTING PACKAGE*

Lighting is available on the handles, floor lighting, the illuminated plate, and the enclosure of the fingerprint reader allowing you to create a refined ambiance at your doors.



Time setting for LED lighting



Wi-Fi and Bluetooth connectivity



Remote management



Voice control with integration of Google Assistant and Amazon Alexa



Temperature control of led light intensity from 2700 Kelvin (warm white) to 6500 Kelvin (cool white)



The SmartLux system is compatible with many popular smart home solutions.



* The led lighting for the entrance doors is exclusively available as part of a package; individual lighting elements cannot be ordered separately. If you choose not to use specific lighting, you can easily turn it off using the Pirnar mobile app.

NEW

UPGRADE

LUXURIOUS PVD COATINGS

MAKE IT **PERSONAL.** MAKE IT **YOURS.**

Inspired by the beauty of luxurious jewellery and watches, you can enhance handles, pull handles, protective trims, or the enclosure of the fingerprint reader with a unique PVD coating. In the opulence of gold, bronze, black, and copper shades, or in stainless steel execution, every detail on your entrance door becomes a synonym for refined personal style and elegance. Pirnar's PVD technology is also characterized by greater resistance to scratches, stains, and wear, longer colour durability, and an extended product lifespan.



BASIS
**STAINLESS
STEEL**



PVD
**GOLDEN
HONEY**



PVD
**COPPER
DUSK**



PVD
**MYSTIC
BRONZE**



PVD
**VOLCANIC
SHADOW**



WATCH THE VIDEO
ABOUT PVD COATINGS

PVD coating is exclusively available as part of a package; individual components cannot be ordered separately.



Garibaldi

ADVANTAGES OF LUXURIOUS PVD COATINGS:

- HIGH RESISTANCE TO SCRATCHES
- LUXURIOUS APPEARANCE
- DURABILITY

NERO

UPGRADE

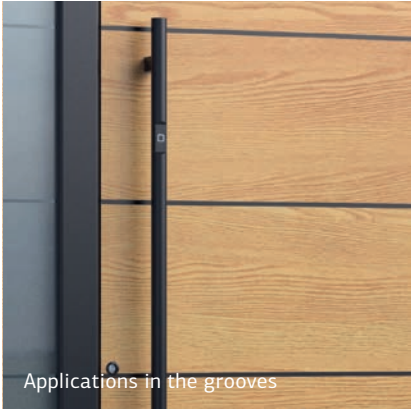
TIMELESS ELEGANCE IN BLACK

NERO EDITION

The Nero Edition package is a collection of sophisticated accessories for entrance doors in an aesthetic black finish. Pull handles, lever handles, protective trims, and even the smallest details, such as glazing frames and cylinder protection, are aesthetically refined with a black powder coating application, while also being additionally protected against corrosion.



Glazing frames



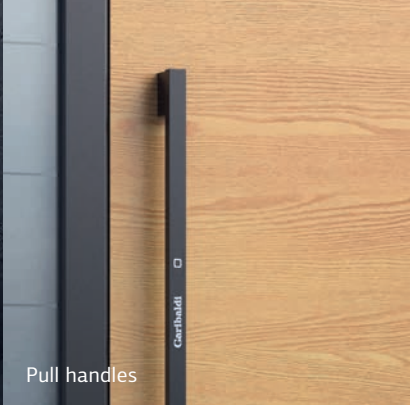
Applications in the grooves



Cylinder protection



Protective trims



Pull handles



Lever handles

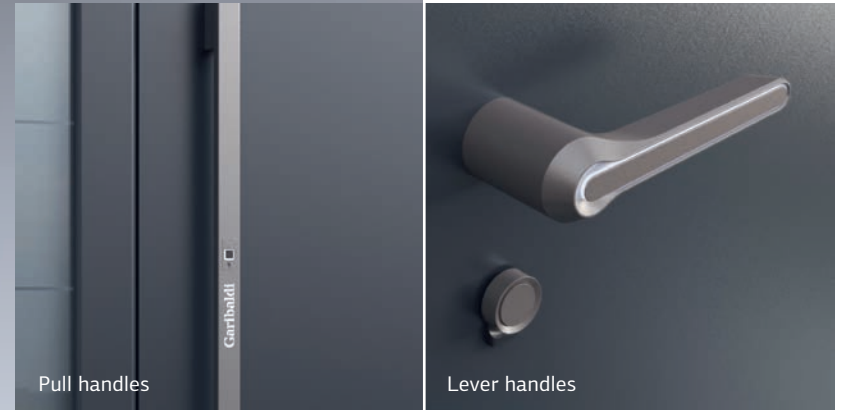
MARINE

UPGRADE

ADDITIONAL CORROSION PROTECTION

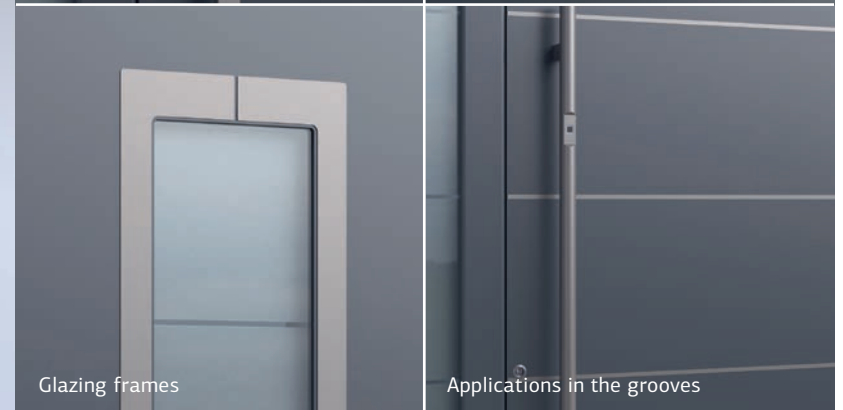
MARINE EDITION

The Marine Edition is a collection of accessories for entrance doors that have been additionally processed using powder coating technology. They are the ideal choice for doors in coastal areas. Pull handles, lever handles, protective trims, and even the smallest details, such as glazing frames and cylinder protection, are aesthetically complemented and further protected against corrosion.



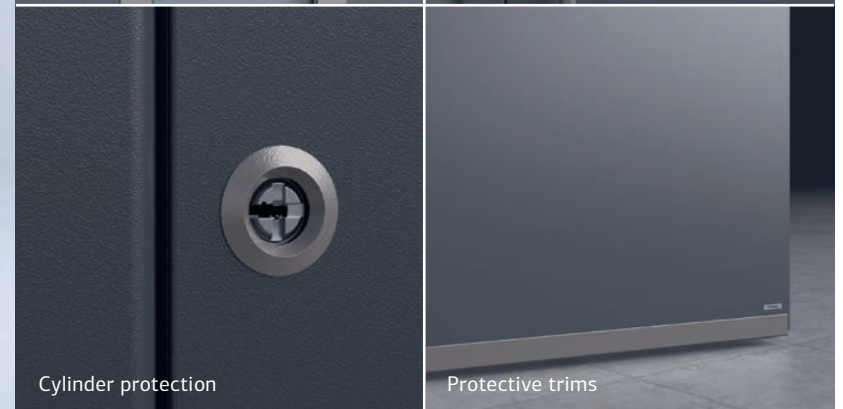
Pull handles

Lever handles



Glazing frames

Applications in the grooves



Cylinder protection

Protective trims

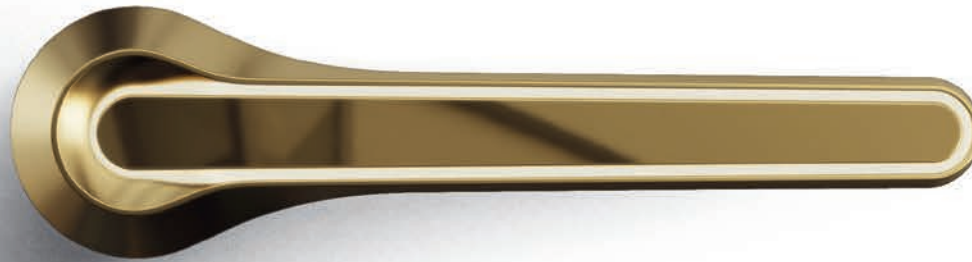
NEW

UPGRADE

THE FIRST TOUCH OF HOME

BRILIANTA

Brilianta is a luxurious handle made of precision-cast stainless steel with a unique mechanism and exceptional shape, expressing strength and character. With premium ergonomic and refined elements, it simplifies the use of doors while creating a cohesive and aesthetically pleasing appearance for the entire entrance interior.

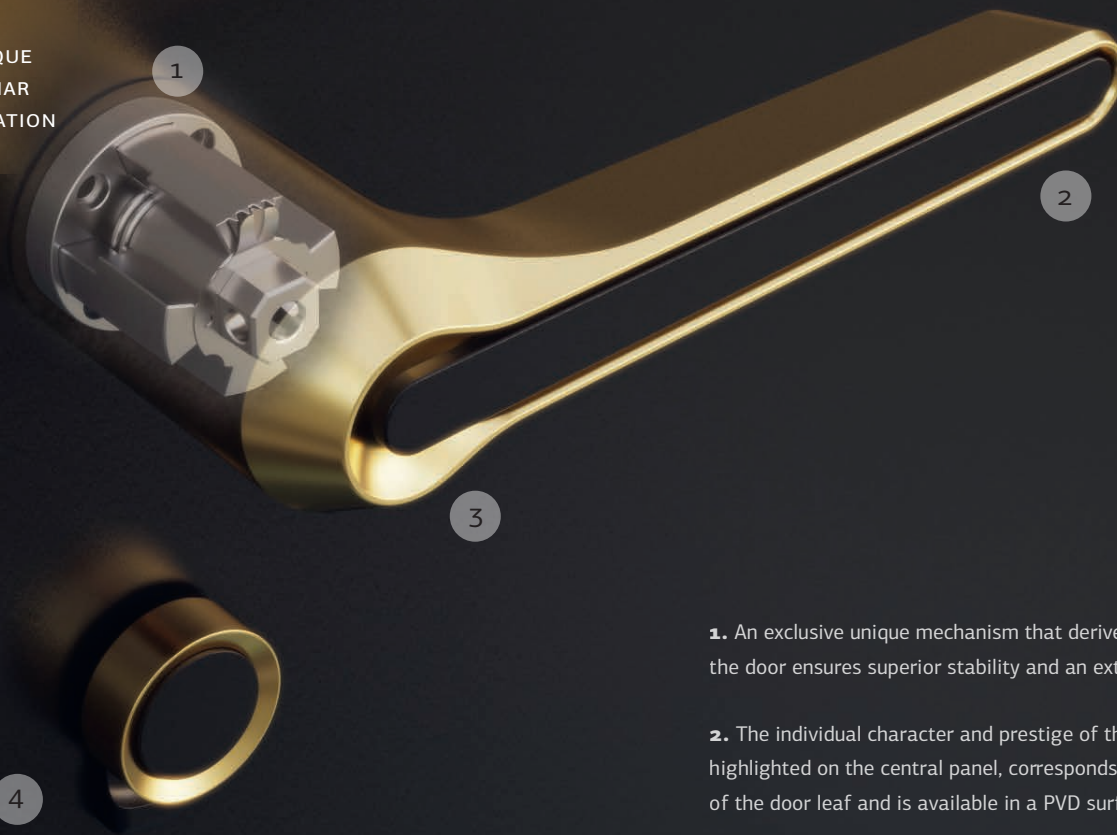


PVD SURFACE COATING
GOLDEN HONEY



WATCH THE VIDEO
ABOUT BRILIANTA

UNIQUE
PIRNAR
INNOVATION

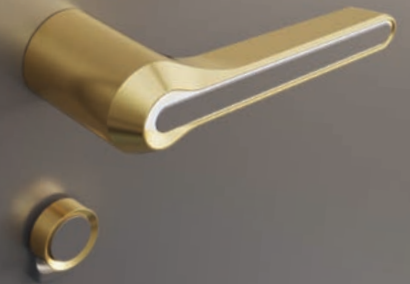


1. An exclusive unique mechanism that derives directly from the door ensures superior stability and an extended lifespan.

2. The individual character and prestige of the entrance, highlighted on the central panel, corresponds with the colour of the door leaf and is available in a PVD surface coating.

3. Subtle illumination beneath the panel creates timeless elegance.

4. The aesthetic button of the cylindrical lock insert enables unlocking and locking the interior of the door without a key.



Handle and central panel in the colour of the door leaf with PVD surface coating



Handle and central panel in the same colour, treated with PVD surface coating



NERO surface coating

UPGRADE

KEEP THE NOISE AND COLD OUT

UNMATCHED THERMAL AND ACOUSTIC INSULATION

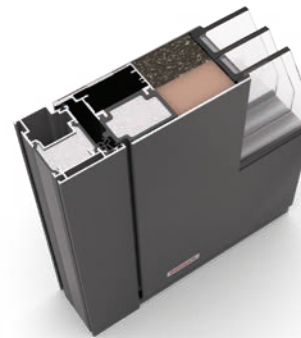
Exceptionally insulated entrance doors prevent heat loss during the winter while keeping the interiors pleasantly cool in the summer. At Pirnar, we have developed superior thermal and acoustic insulation for those who do not wish to compromise on comfort and energy-efficient living. With record values for insulation, you will save on heating costs and ensure an energy-efficient home through the entrance doors.



SOUNDCORE

The best solution for homes in urban areas.

SoundCore is premium sound insulation for residential houses in urban environments, featuring a filling density of 900 kg/m^3 in the door leaf. In combination with superior sealing, it reduces the sound load in living areas by more than 18 times compared to fully open doors. The intensity of sound passing through the entrance doors is significantly reduced compared to values found in standard entrance doors.



UPGRADE

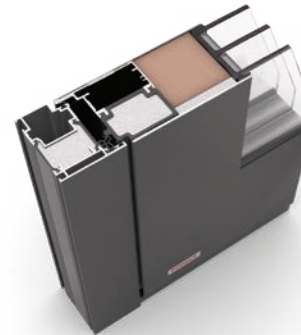
SoundCore

Thermal transmittance:	$U_d = \text{from } 0,88 \text{ W/(m}^2\text{K)}$
Sound insulation:	$R_w (C; C_{tr}) = \text{up to } 43 (-1; -4) \text{ dB}$
Insulation panel:	SoundCore

THERMOCORE

Extraordinarily low thermal transmittance values, suitable for passive construction.

ThermoCore is premier thermal insulation for residential houses and passive construction, with significantly higher thermal insulation properties. Exceptionally thin panels made of glass nano fibres, combined with other insulating materials, contribute to reduced energy consumption and additional savings on heating. Thermal insulation is improved by nearly 20 % compared to standard doors.



UPGRADE

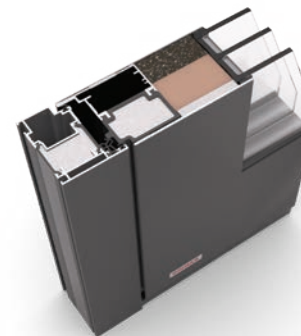
ThermoCore

Thermal transmittance:	$U_d = \text{from } 0,63 \text{ W/(m}^2\text{K)}$
Insulation panel:	ThermoCore

SUPREMECORE

The only one on the market that offers outstanding thermal and acoustic insulation simultaneously.

SupremeCore is premium insulation for residential houses that boasts record values for both sound insulation and thermal transmittance. Innovative insulation panels for sound and heat, combined with other materials, create solid doors with exceptional soundproofing qualities and the lowest possible thermal losses. With excellent sound insulation, you do not compromise on thermal transmittance.



SUPERIOR
UPGRADE

SupremeCore

Thermal transmittance:	$U_d = \text{from } 0,65 \text{ W/(m}^2\text{K)}$
Sound insulation:	$R_w (C; C_{tr}) = \text{up to } 42 (-2; -5) \text{ dB}$
Insulation panel:	SoundCore + ThermoCore

R_w = sound insulation / C = correction factor for mid-frequency ranges / C_{tr} = correction factor for low-frequency ranges

A photograph of a modern building facade with a dark brown lower section and a light beige upper section. A series of dark vertical columns supports a horizontal overhang. In the foreground, there is a gravel courtyard with several clumps of green grass. A white horizontal bar is overlaid across the middle of the image, containing the text 'PREMIUM MODELS'.

PREMIUM MODELS





6023

Colour 90147 / PVD VOLCANIC SHADOW / Clear glass motif sandblasted / OneTouch handle 9623 with SMARTLUX illumination / SECUROSMART finger scanner with ARMO COMFORT ELECTRO lock / Protective trim 6445 glossy / Ambient floor lighting SMARTLUX



6024

Colour FS 7016 / PVD MYSTIC BRONZE / Decorative tempered glass NIGHT STORM GLOSS outside / OneTouch handle 9623 with SMARTLUX illumination / SECUROSMART finger scanner in the handle with ARMO COMFORT ELECTRO lock / Protective trim 6445 glossy / Ambient floor lighting SMARTLUX



6022

Colour FS 9005 / PVD GOLDEN HONEY / Decorative tempered glass DARK GREY with black motif outside / Parsol Grey glass inside / OneTouch handle 9623 with SMARTLUX illumination / SECUROSMART finger scanner with ARMO COMFORT ELECTRO lock / Protective trim 6445 glossy / Ambient floor lighting SMARTLUX

PVD



GERMAN
DESIGN
AWARD
SPECIAL
2017

OneTouch

A GLOBAL INNOVATION

AUTOMATIC DOOR OPENING MECHANISM

ELEGANT ALIGNMENT WITH THE DOOR LEAF

PVD

NERO

MARINE





6025

*Colour FS 9016 / Handle 9631M / Satinato glass /
SECUROSMART finger scanner with ARMO COMFORT
ELECTRO lock*



6013

*Colour wood imitation BLACK OAK / Satinato glass /
Handle 9610 / SECUROSMART finger scanner with ARMO
COMFORT ELECTRO lock*



6017

*Colour FS 3004 / PVD GOLDEN HONEY / Handle 9619 / SECUROSMART
finger scanner with ARMO COMFORT ELECTRO lock / Protective trim 6444 /
Ambient floor lighting SMARTLUX*



6018

*Colour DB 703 (80077) / Clear glass motif sandblasted / Handle 9619
with SMARTLUX illumination / SECUROSMART finger scanner with ARMO
COMFORT ELECTRO lock / Protective trim 6444*



6019

*Colour FS 8019 / PVD COPPER DUSK / Clear glass motif
sandblasted / Handle 9619 / Ambient floor lighting SMARTLUX*



PVD

NERO

MARINE



PVD

NERO

MARINE



6016

Colour FS 7016 / Clear glass motif sandblasted / Handle 9602M / SECUROSMART finger scanner with ARMO COMFORT ELECTRO lock / Protective trim 6444



6015

*Colour FS 9016 / Satinato glass / Handle 9602M /
SECUROSMART finger scanner with ARMO COMFORT
ELECTRO lock / Protective trim 6444*



6014

*Colour DB 703 (80077) / PVD GOLDEN HONEY / Handle 9602M with SMARTLUX illumination /
Scratch protection PRIVILEGELUX prepared for finger scanner / SECUROSMART finger scanner with
ARMO COMFORT ELECTRO lock*

PVD

NERO

MARINE





0160

Colour FS 9005 / Additional colour outside FS QUARZ 1 / PVD VOLCANIC SHADOW / Clear glass motif sandblasted / Handle 9202 / SECUROSMART finger scanner with ARMO COMFORT ELECTRO lock / Protective trim 6444



0167

Colour FS 9016 / PVD COPPER DUSK / 3D Dune / Satinato glass / Personalized handle 9209 with SMARTLUX illumination / SECUROSMART finger scanner with ARMO COMFORT ELECTRO lock / Protective trim 6444



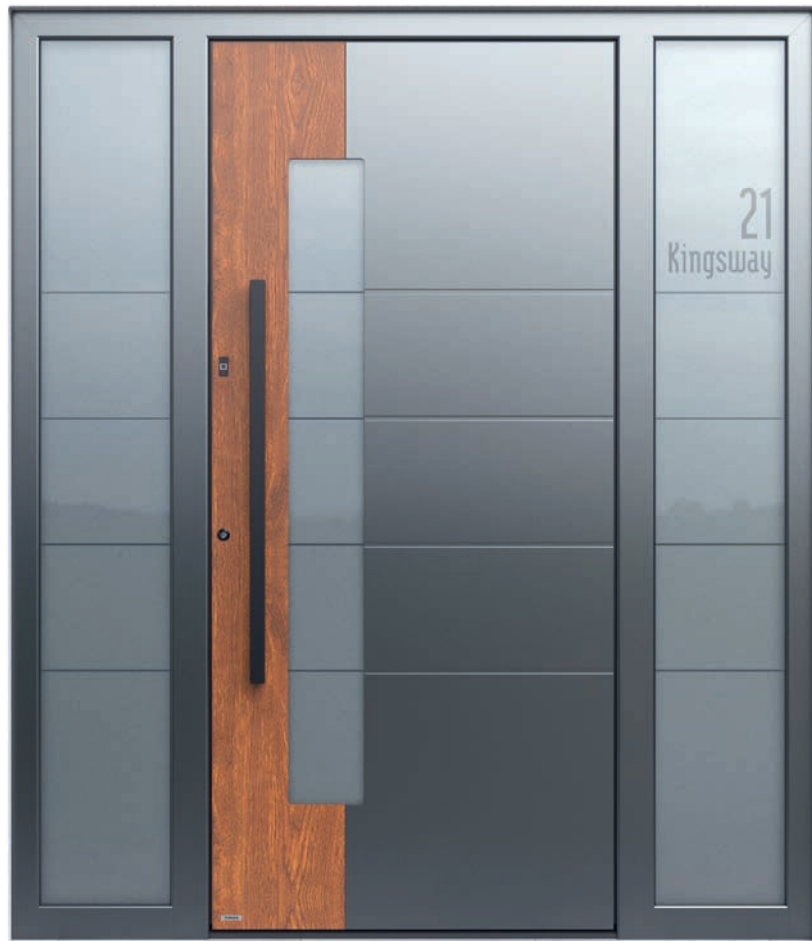
0180

Colour wood imitation RUSTICS / Decorative tempered glass NIGHT SKY GLOSS / Clear glass fully sandblasted / Handle NAUTILUS 9628 / SECUROSMART finger scanner with ARMO COMFORT ELECTRO lock



0130

Colour RAL 9007 / PVD VOLCANIC SHADOW / Decorative tempered glass NIGHT SKY GLOSS / Clear glass motif sandblasted / Handle 9202 / SECUROSMART finger scanner with ARMO COMFORT ELECTRO lock



1882

Colour 70105 / Additional colour wood imitation GOLDEN OAK / Clear glass motif sandblasted / Handle ANGULAR95 NERO / SECUROSMART finger scanner with ARMO COMFORT ELECTRO lock



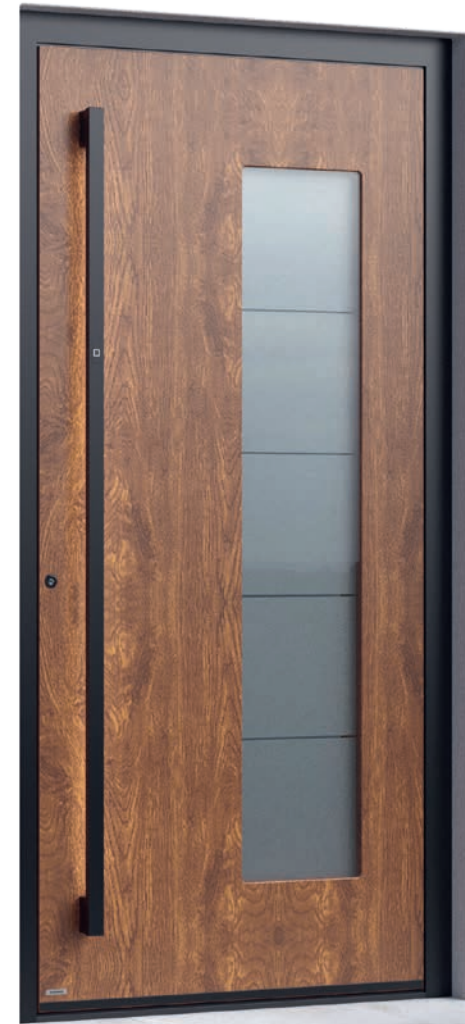
0100

Colour 90147 / Additional colour FS 9016 / Clear glass motif sandblasted / Handle ANGULAR95 / SECUROSMART finger scanner and ARMO COMFORT ELECTRO lock



2341

Colour wood imitation NATURAL OAK / Colour FS 9005 / Clear glass motif sandblasted / Handle ANGULAR150 NERO / Protective trim 6444



1040

Colour wood imitation TWISTED OAK / Colour FS 9005 / Clear glass motif sandblasted / Handle ANGULAR180 NERO with SMARTLUX illumination / SECUROSMART finger scanner with ARMO COMFORT ELECTRO lock / Protective trim 6444



1031

*Colour FS 9016 / PVD COPPER DUSK / Clear glass motif sandblasted /
Handle ANGULAR95 / Protective trim 6444*



1033

*Colour FS 9016 / Clear glass motif sandblasted / Handle ANGULAR115 / SECUROSMART finger
scanner with ARMO COMFORT ELECTRO lock / Protective trim 6267*



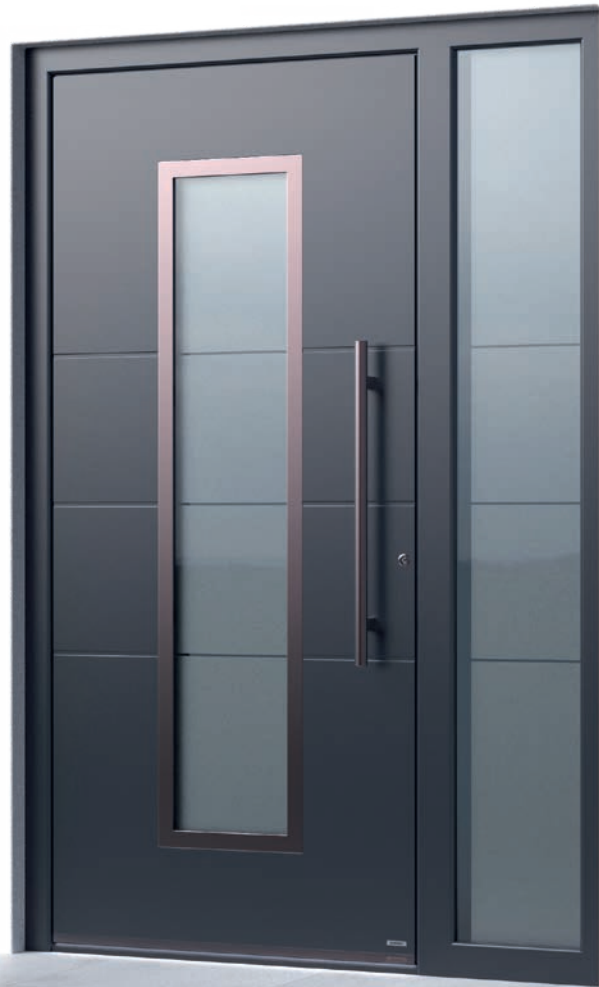
2521

Colour 70105 / Clear glass motif sandblasted / Handle ANGULAR95 / SECUROSMART finger scanner with ARMO COMFORT ELECTRO lock / Protective trim 6267



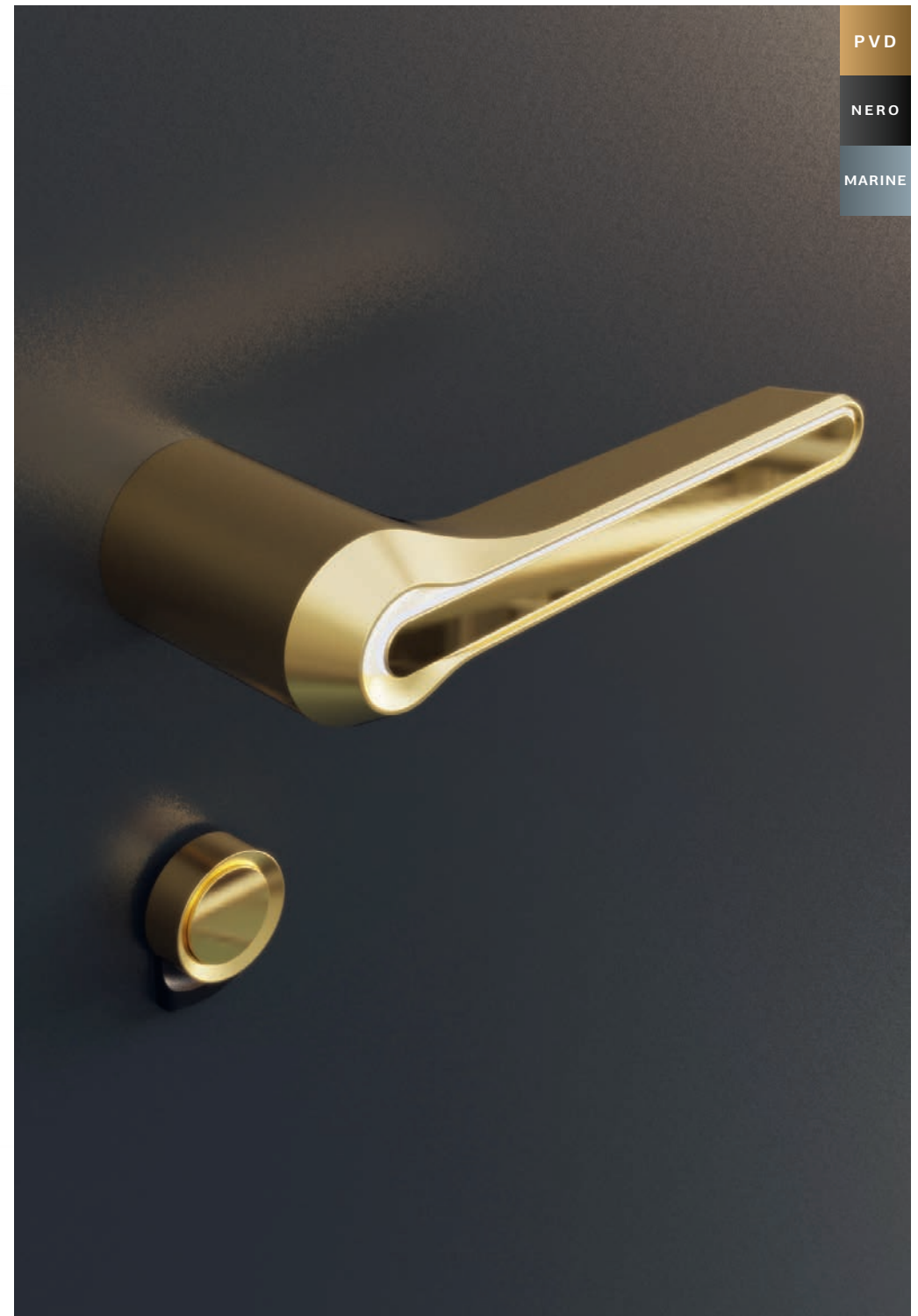
1081

Colour wood imitation DARK OAK / Clear glass motif sandblasted / Handle ANGULAR95 NERO / Protective trim 64444 NERO



2380

*Colour FS 7016 / PVD MYSTIC BRONZE / Clear glass motif
sandblasted / Handle ROUND75 / Protective trim 6444 / Ambient
lighting SMARTLUX*



PVD

NERO

MARINE

PVD

NERO

MARINE



Garibaldi



GERMAN
DESIGN
AWARD
SPECIAL
2019



1050

*Colour 90146 / PVD VOLCANIC SHADOW / Satinato glass / Personalized handle
ANGULAR170 with illumination LABELUX / SECUROSMART finger scanner with
ARMO COMFORT ELECTRO lock / Protective trim 6444*



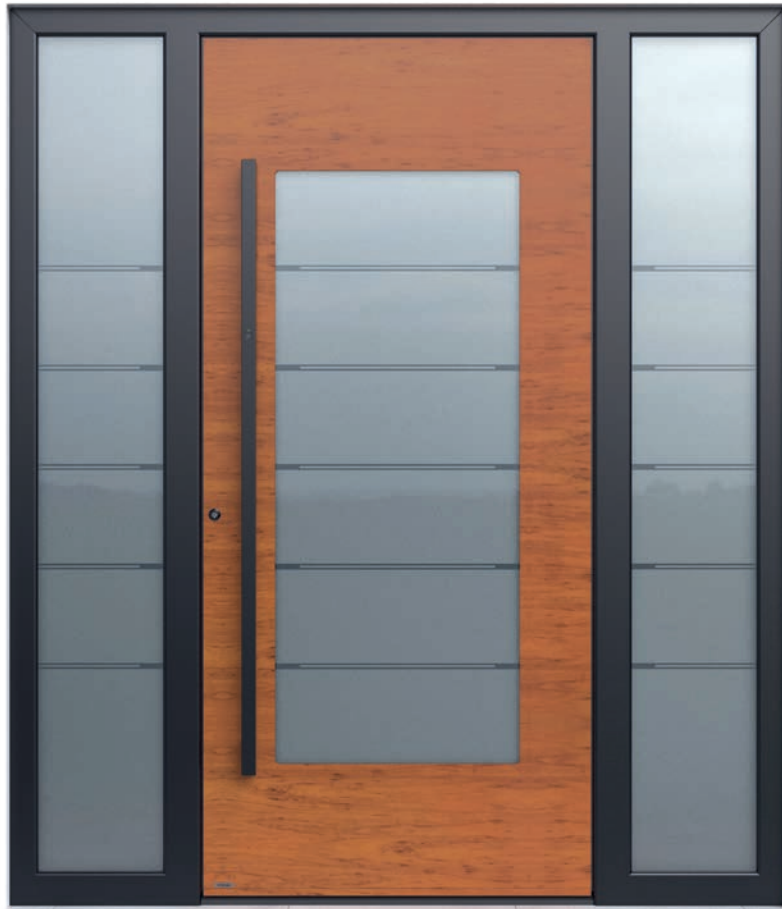
1005

Colour FS 9005 / PVD GOLDEN HONEY / Clear glass motif sandblasted / Handle ANGULAR75 / SECUROSART finger scanner with ARMO COMFORT ELECTRO lock / Protective trim 6444



1004

Colour 90146 / PVD VOLCANIC SHADOW / Clear glass motif sandblasted / Handle ANGULAR115 / Protective trim 6444



1841

Colour wood imitation OAK WINCHESTER / Colour FS 9005 / Clear glass motif sandblasted / Handle ANGULAR110 NERO / SECUROSMART finger scanner with ARMO COMFORT ELECTRO lock



0141

Colour 70105 / Additional colour wood imitation BLACK OAK / Clear glass motif sandblasted / Handle ANGULAR115 / SECUROSMART finger scanner with ARMO COMFORT ELECTRO lock



0140

Colour 70105 / ESG glass NIGHT SKY GLOSS / Clear glass motif sandblasted / Handle ANGULAR ALTUM 3240 NERO / SECUROSMART finger scanner with ARMO COMFORT ELECTRO lock



PVD

NERO

MARINE



1110

Colour 90146 / PVD VOLCANIC SHADOW / Clear glass fully sandblasted / Handle ANGULAR170 / SECUROSMART finger scanner with ARMO COMFORT ELECTRO lock / Protective trim 6444 / Ambient lighting SMARTLUX



1682

Colour 70105 / Clear glass motif sandblasted / Handle ROUND170 with SMARTLUX illumination / SECUROSMART finger scanner with ARMO COMFORT ELECTRO lock / Protective trim 6444



1401

Colour wood imitation DARK OAK / Clear glass fully sandblasted / Handle ANGULAR135 NERO with SMARTLUX illumination / Protective trim 64444 NERO



1673

Colour FS 8019 / PVD VOLCANIC SHADOW / Clear glass motif sandblasted / Handle ANGULAR135 with SMARTLUX illumination / SECUROSMART finger scanner with ARMO COMFORT ELECTRO lock / Protective trim 6444



PVD

NERO

MARINE



1016

Double-leaf door / Colour DB 703 (80077) / PVD VOLCANIC SHADOW / Handle ANGULAR180 with SMARTLUX illumination / SECUROSMART finger scanner with ARMO COMFORT ELECTRO lock / Protective trim 6444 / 3D DUNE



1665

Colour FS QUARZ 2 / Additional colour FS 9005 / PVD COPPER DUSK / Handle ROUND170 / SECUROSMART finger scanner with ARMO COMFORT ELECTRO lock / Protective trim 6444 / 3D WAVE



1010

Colour 90147 / Handle ANGULAR80 / SECUROSMART Keypad with ARMO COMFORT ELECTRO lock / Protective trim 6444



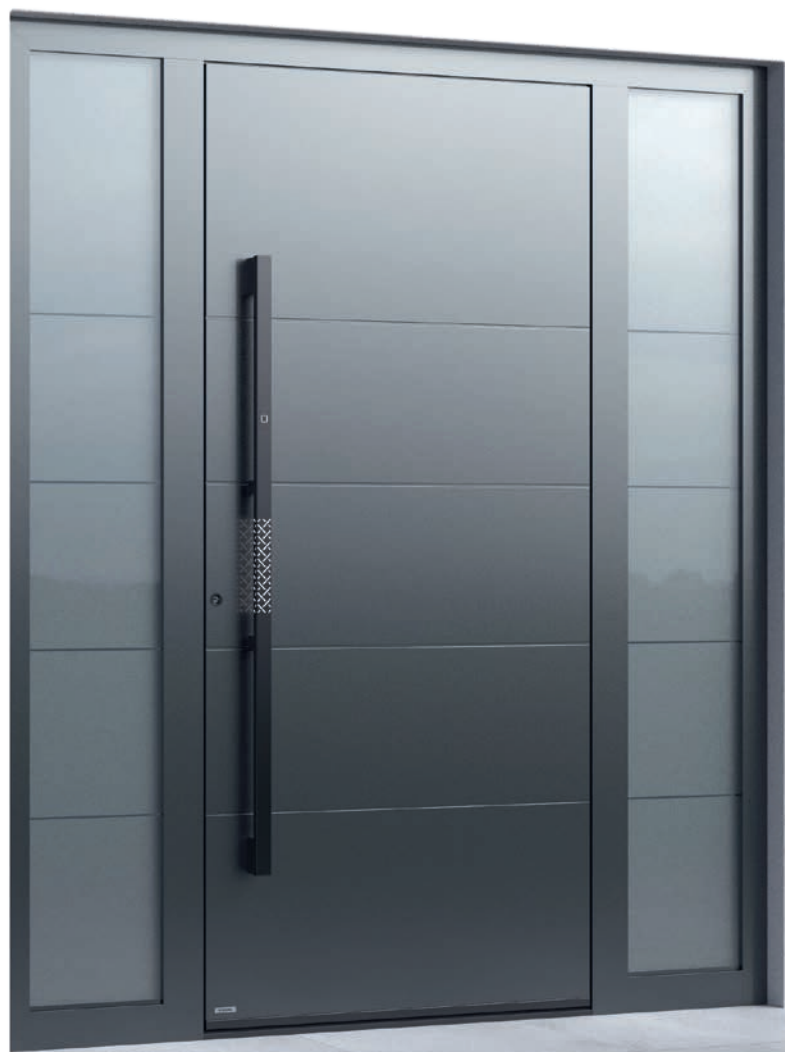
6010

Colour FS 7016 / PVD MYSTIC BRONZE / Decorative tempered glass AFRICAN MISTERY MATTE / Special handle LUXOR SPECTRA with SMARTLUX illumination / SECUROSMART finger scanner with ARMO COMFORT ELECTRO lock / Protective trim 6445



6011

Colour 90146 / PVD COPPER DUSK / Special handle LUXOR SPECTRA with SMARTLUX illumination / SECUROSMART finger scanner with ARMO COMFORT ELECTRO lock / Protective trim 6444



6011

Colour 70105 / PVD VOLCANIC SHADOW / Handle ANGULAR150 with MAGMALUX illumination / SECUROSMART finger scanner with ARMO COMFORT ELECTRO lock / Protective trim 6444



PVD

NERO

MARINE





PVD

PREMIUM
48
PIRNAR





6009

Colour FS 9005 / PVD VOLCANIC SHADOW / Decorative tempered glass NIGHT SKY GLOSS / Elegant handle ANGULAR180 with MAGMALUX illumination / SECUROSMART finger scanner with ARMO COMFORT ELECTRO lock / Protective trim 6444



6005

Colour 90147 / Decorative tempered glass NIGHT SKY GLOSS / Special handle LUXOR SPECTRA with SMARTLUX illumination / SECUROSMART finger scanner with ARMO COMFORT ELECTRO lock / Protective trim 6444

PVD

NERO

MARINE



GERMAN
DESIGN
AWARD
SPECIAL
2019



1850

Colour FS QUARZ 2 / PVD VOLCANIC SHADOW / Handle ANGULAR180 with MAGMALUX illumination / Protective trim 6444



1641

Colour DB 703 (80077) / Handle 9613 with SMARTLUX illumination / SECUROSMART finger scanner with ARMO COMFORT ELECTRO lock / Protective trim 6444



1860

Colour 70105 / Additional colour 70161 / PVD VOLCANIC SHADOW / Handle 9614 with SMARTLUX illumination / SECUROSMART finger scanner with ARMO COMFORT ELECTRO lock / Protective trim 6267

NERO

MARINE



THE REFINED ELEGANZA HANDLE, DESIGNED IN THE COLOUR OF THE INTERNAL DOOR LEAF, IS AVAILABLE AS STANDARD EQUIPMENT.



1641

Colour FS QUARZ 2 / Handle ANGULAR180 NERO with SMARTLUX illumination / SECUROSMART finger scanner with ARMO COMFORT ELECTRO lock / Protective trim 64444 NERO



1830

*Colour FS 9016 / PVD COPPER DUSK / Handle
ANGULAR115 / SECUROSMART finger scanner with
ARMO COMFORT ELECTRO lock / Protective trim 6444*



PVD

NERO

MARINE



0170

Colour FS QUARZ 2 / PVD VOLCANIC SHADOW / Decorative tempered glass DARK GREY with black motif outside / Satinato glass / Handle 9626 with CRYSTALUX illumination / SECUROSMART finger scanner with ARMO COMFORT ELECTRO lock



1340

*Colour 70161 / PVD MYSTIC BRONZE / Clear glass motif sandblasted / Handle 9626
with CRYSTALUX illumination / SECUROSMART finger scanner with ARMO COMFORT
ELECTRO lock / Protective trim 6444*



PVD

NERO

MARINE



GERMAN
DESIGN
AWARD
SPECIAL
2019



1980

Colour DB 703 (80077) / Additional colour 90146 / PVD VOLCANIC SHADOW / Clear glass motif sandblasted, fused glass, glass application (clear) / Handle 9106 / SECUROSMART finger scanner with ARMO COMFORT ELECTRO lock / Protective trim 6267



1890

Colour RAL 9007 / Additional colour 70105 / Clear glass motif sandblasted / Handle 9104 / SECUROSMART finger scanner with ARMO COMFORT ELECTRO lock



1920

Colour 70105 / Additional colour 70161 / PVD VOLCANIC SHADOW / Clear glass motif sandblasted / Handle 9105 / SECUROSMART finger scanner and ARMO COMFORT ELECTRO lock



0120

Colour FS 9005 / Additional colour FS QUARZ 2 / PVD VOLCANIC SHADOW / Clear glass motif sandblasted / Handle 9204 / SECUROSMART finger scanner with ARMO COMFORT ELECTRO lock



1970

Colour 90146 / Additional colour DB 703 (80077) / Clear glass motif sandblasted / Handle ROUND150 / SECUROSMART finger scanner with ARMO COMFORT ELECTRO lock / Protective trim 6203

PVD

NERO

MARINE







P R E M I U M C L A S S I C O M O D E L S





3350

Colour FS 5024 / PVD COPPER DUSK / Door handle BRILIANTA / Stained glass / Decorative Element D9



3310

Colour FS 9016 / PVD COPPER DUSK / Handle ANGULAR150 with CRYSTALUX illumination / Electronic peephole 6222-1 / Protective trim 6444



3320

*Colour RAL 3003 MATT / PVD VOLCANIC SHADOW / Stained glass / Handle
ANGULAR180 / Protective trim 6444*



3330

*Colour FS 7016 / PVD MYSTIC BRONZE / Stained glass / Handle
ANGULAR180 / Protective trim 6444*



3050

Colour FS 9016 / PVD GOLDEN HONEY / Engraved satinato glass motif sandblasted / Handle ROUND55 CLASS / Protective trim 6203



3141

Colour DB 703 (80077) / PVD MYSTIC BRONZE / Stained glass / Handle ROUND55 / Protective trim 6203



3142

Colour FS 6005 / PVD COPPER DUSK / Stained glass / Handle ROUND55 RING / Protective trim 6203



3200

*Colour FS 6005 / PVD GOLDEN HONEY /
Knocker 6254 / Peephole 6202-1 / Handle
ROUND95 / Protective trim 6203*



3031

*Colour FS 9016 / PVD VOLCANIC SHADOW /
Clear glass motif sandblasted / Handle
ROUND75 / Protective trim 6267*



3270

Colour FS 8016 / PVD COPPER DUSK / Clear glass motif sandblasted / Handle ROUND55 CLASS / Protective trim 6203



3250

Colour FS 7016 / PVD COPPER DUSK / Clear glass motif sandblasted / Handle ROUND75 / Protective trim 6203



3280

Colour 90147 / Clear glass motif sandblasted / Handle ROUND75 RING / Protective trim 6203

PVD

NERO

MARINE





3290

*Colour 90147 / PVD VOLCANIC SHADOW / Stained glass /
Handle ROUND75 / Protective trim 6203*



3300

*Colour FS 7016 / PVD MYSTIC BRONZE / Clear glass motif
sandblasted / Handle ROUND75 / Protective trim 6203*



3170

Colour wood imitation GOLDEN OAK / PVD VOLCANIC SHADOW / Clear glass motif sandblasted / Handle ROUND55 RING / Protective trim 6203



3181

Colour FS 9016 / PVD COPPER DUSK / Clear glass motif sandblasted / Handle ROUND55 / Protective trim 6203



3210

*Colour FS 7016 / PVD MYSTIC BRONZE / Stained glass /
Handle ROUND75 RING / Protective trim 6203*



STAINED GLASS

HANDCRAFTED USING TRADITIONAL
GLASSMAKING TECHNIQUES

PVD

NERO

MARINE





3240

*Colour FS 6005 / PVD COPPER DUSK / Stained glass / Handle ROUND55 /
Protective trim 6203*



3340

*Colour RAL 5002 MATTE / PVD GOLDEN HONEY / Stained glass / Handle ROUND75 /
SECUROSMART finger scanner with ARMO COMFORT ELECTRO lock / Protective
trim 6203*

P R E M I U M E Q U I P M E N T



handbuilt by
PIRNAR

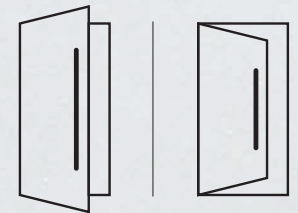
for the
Lewis
family

CONSTRUCTION AND INSULATION

The patented construction made from CarbonCore carbon fibres allows for a variety of design and functional upgrades.



ALIGNMENT INSIDE AND OUTSIDE



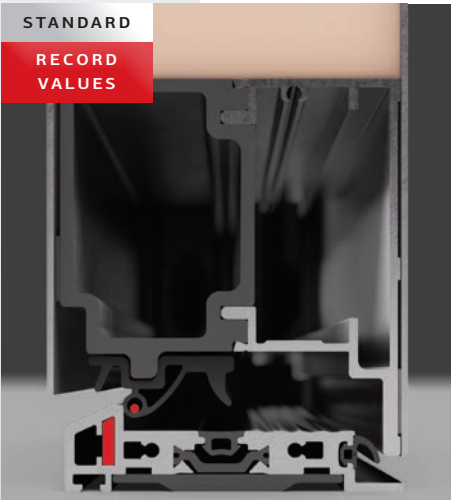
INWARD AND OUTWARD OPENING

CONCEALED HINGES FOR ADDED SECURITY AND AESTHETIC APPEARANCE

REFINED DESIGN, WHERE ALL ELEMENTS ARE IN ELEGANT BLACK

STANDARD

RECORD
VALUES



1

Magnet WeatherSeal sealing

STANDARD



2

Alignment inside and outside

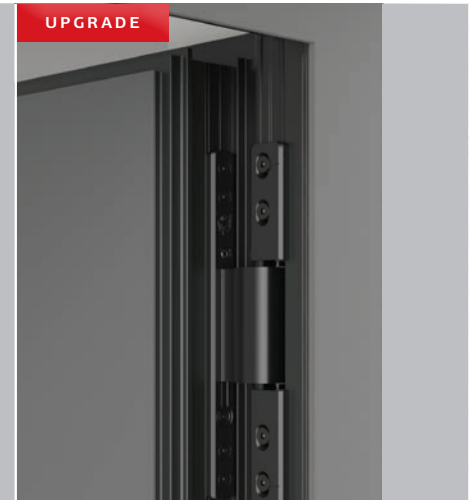
STANDARD



3

Solid adjustable hinges in the colour
of the door

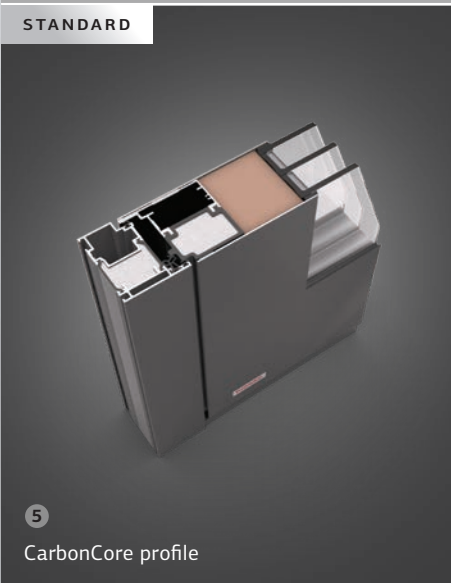
UPGRADE



4

Concealed hinges

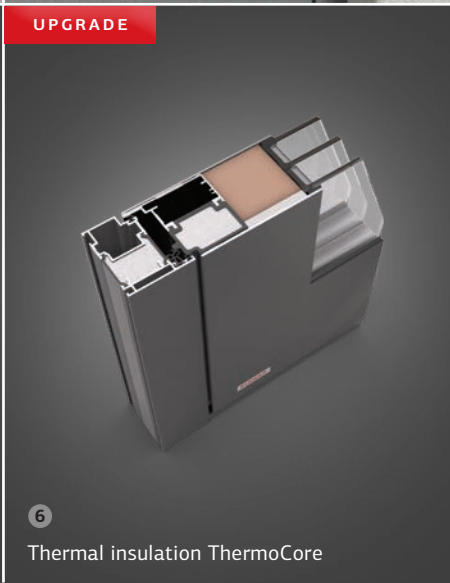
STANDARD



5

CarbonCore profile

UPGRADE



6

Thermal insulation ThermoCore

UPGRADE



7

Sound insulation SoundCore

SUPERIOR
UPGRADE



8

Sound and thermal insulation SupremeCore

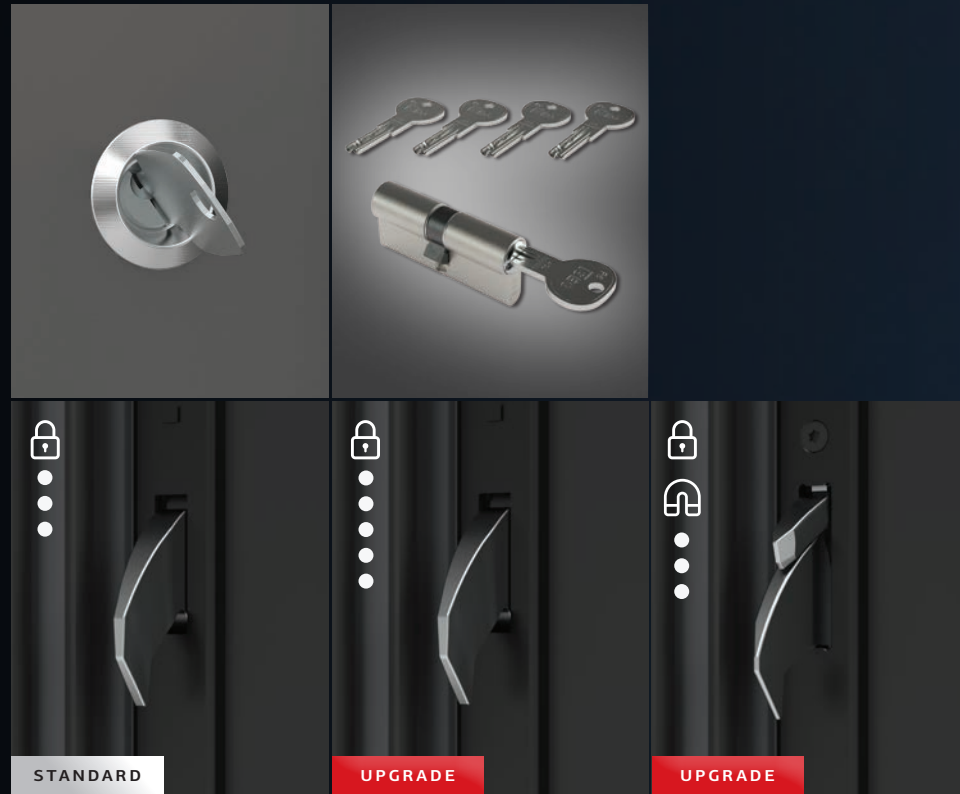
LOCKING SYSTEMS FOR COMPLETE SECURITY

Pirnar offers state-of-the-art locking systems supported by the highest quality locks and management methods. Whether you choose classic key unlocking, a modern method with a fingerprint reader, or a keypad, you will ensure flawless security for your home.



* The RC2 package is standardly available for inward opening single-leaf door configurations with a solid leaf, dimensions up to 1250 x 2400 mm, without toplights or sidelights. For designs with glass in the door leaf featuring sidelights, toplights, or separate sidelights, the RC2 package is available as an additional option.

UNLOCKING WITH A KEY



ARMO

3-point locking system with two solid hooks

ARMO MAX

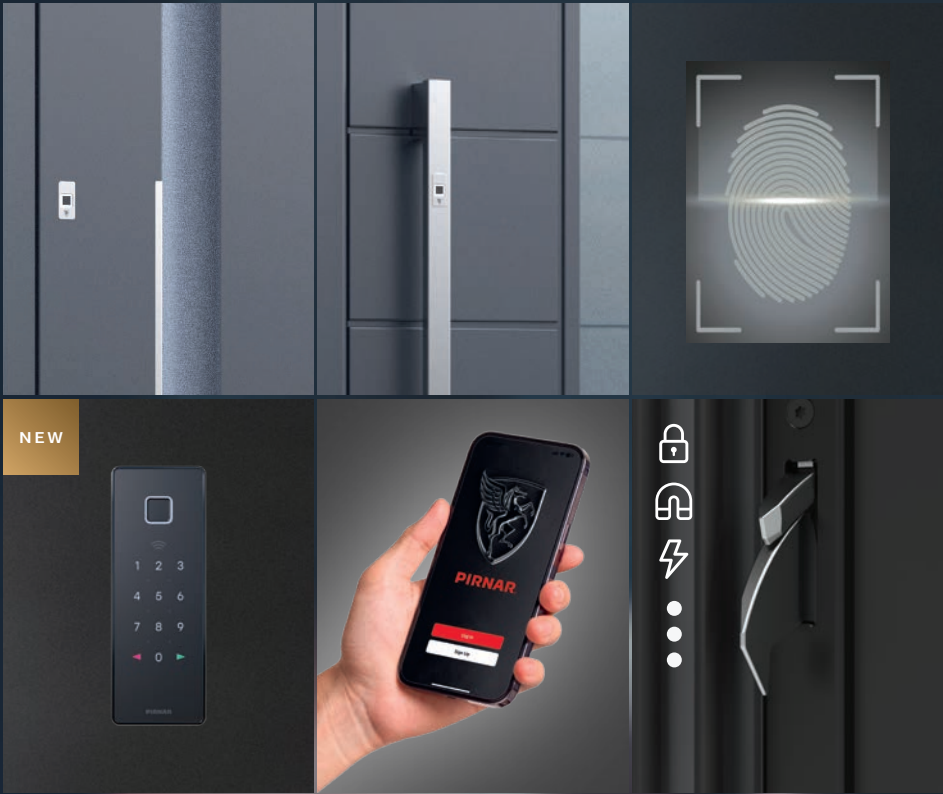
5-point locking system with four solid hooks

ARMO COMFORT

3-point locking system with two solid hooks and day/night function

RECOMMENDED
UPGRADE

**UNLOCKING WITH FINGERPRINT READER, KEYPAD, OR CHIP WITH
ARMO COMFORT ELECTRO OR ARMO COMFORT ELECTRO PLUS SYSTEMS**



ARMO COMFORT ELECTRO AND PLUS

3-point locking system with two solid hooks, electric opener, and day/night function. Upgradeable to the Armo Comfort Electro Plus, providing a fully motorised solution for safe and comfortable use of the entrance door.

GLASS

With a rich selection of premium decorative glazing from Pinar's glassworks, you will elevate the appearance of your entrance.



FULL RANGE OF GLASS

STANDARD	UPGRADE
<p>Clear</p>	<p>Parsol grey</p>
<p>Satinato white</p>	<p>Parsol grey motif sandblasted</p>
<p>Clear glass motif sandblasted</p>	<p>Parsol brown</p>
<p>Satinato motif sandblasted</p>	<p>Parsol brown motif sandblasted</p>



HANDCRAFTED Traditional glassmaking technique

The stained glass, adorning the magnificent windows of Europe's most beautiful cathedrals, is a popular choice in Classico door models. It is crafted with dedicated precision by Pinar's artisan masters using traditional techniques.

UPGRADE

DECORATIVE TEMPERED GLASS

Decorative tempered glass offers greater safety and, in various colours with both shiny and matte finishes creates a refined, minimalist, and glamorous look on modern entrances.

NIGHT SKY MATTE

Black tinted surface without a pattern on fine-matte glass.

NIGHT SKY GLOSS

Tinted surface without a pattern on glossy smooth clear glass.

NIGHT STORM MATTE

Elegant black-and-white striped pattern on fine-matte glass.

NIGHT STORM GLOSS

Elegant black-and-white striped pattern on glossy smooth clear glass.

AFRICAN MYSTERY MATTE

Striped pattern in black-copper colour on fine-matte glass.

AFRICAN MYSTERY GLOSS

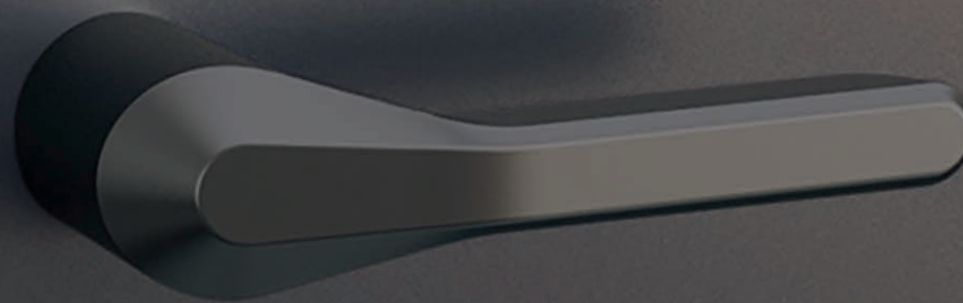
Striped pattern in black-copper colour on glossy smooth clear glass.

NEW

STANDARD

HANDLES

Enhance the interior of your entrance doors with elegant and technologically refined handles that will aesthetically complement the appearance of your interior.



WATCH THE VIDEO
ABOUT HANDLES



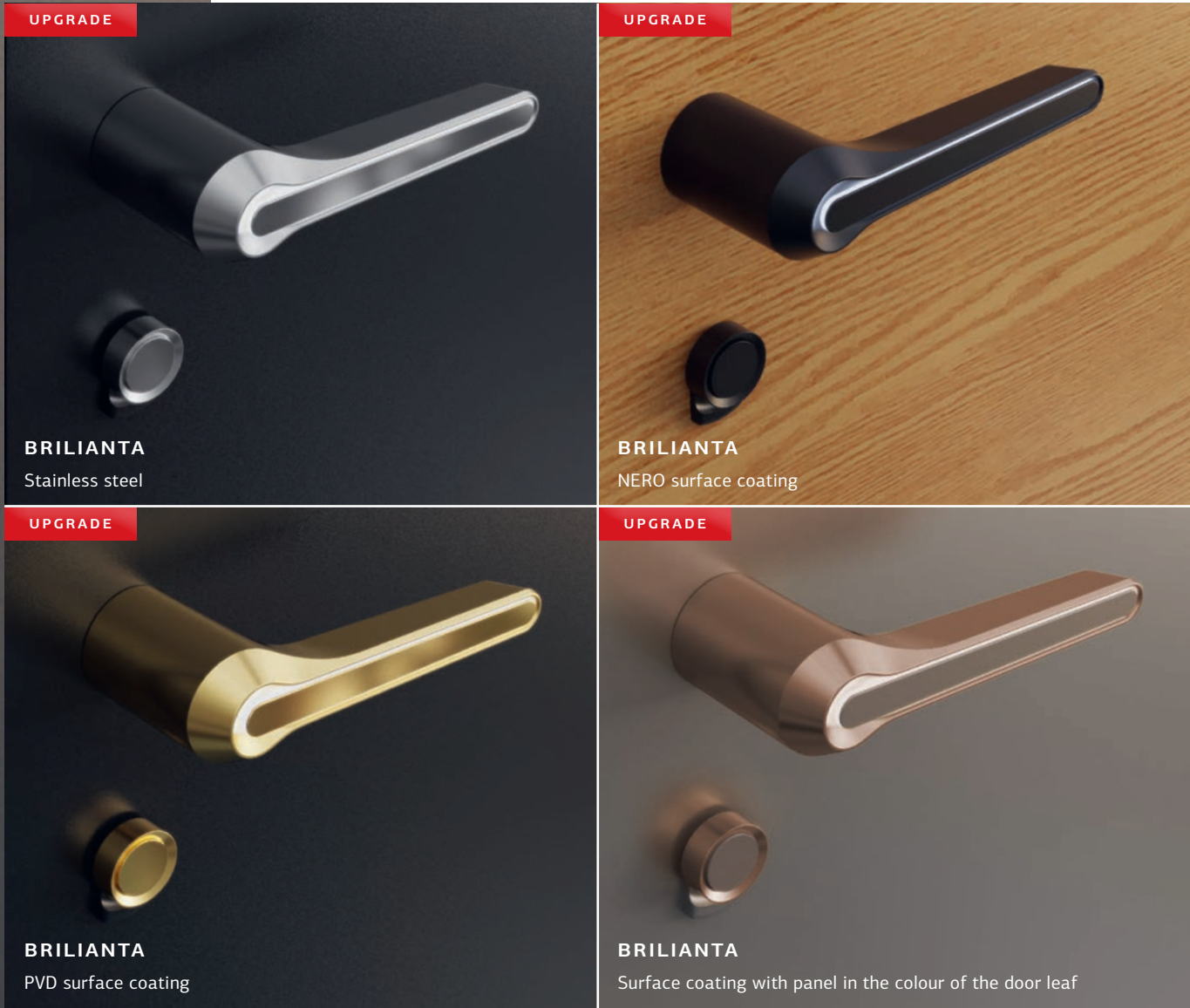
WATCH THE VIDEO
ABOUT PVD COATINGS

ELEGANZA IN THE COLOUR OF THE DOOR LEAF

Eleganza is a stunning internal handle made of die-cast aluminum, providing a sensation of lightness and exceptional security.

ELEGANT APPEARANCE WITH SURFACE FINISHES

The Brilianta interior handle can be aesthetically enhanced with various surface finishes. Use powder coating to create an elegant black colour, or employ PVD technology to embellish the appearance in noble gold, bronze, copper, or black, or admire its appearance in stainless steel.



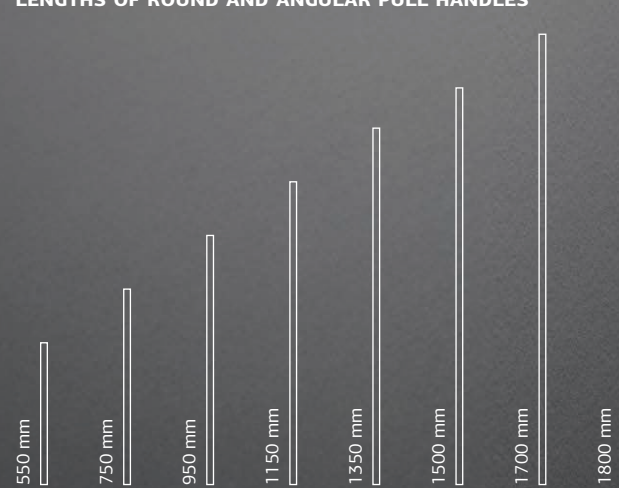
UPGRADE

UNIQUE PERSONALIZATION OPTIONS

EXCEPTIONAL PULL HANDLES

The pull handle is one of the most personal elements of a door. Every resident touches it at least a thousand times a year, which is why Pirnar dedicates considerable attention to it. Each model features a selection of basic shapes, either round or angular, with an exact length specified. To create the best impression and personal touch, we have developed several series of unique illuminated pull handle upgrades that utilize patented technology and have been awarded the prestigious international German Design Award Special 2019.

LENGTHS OF ROUND AND ANGULAR PULL HANDLES



For additional information about the full range of available pull handles and lighting upgrades, please consult our sales staff.

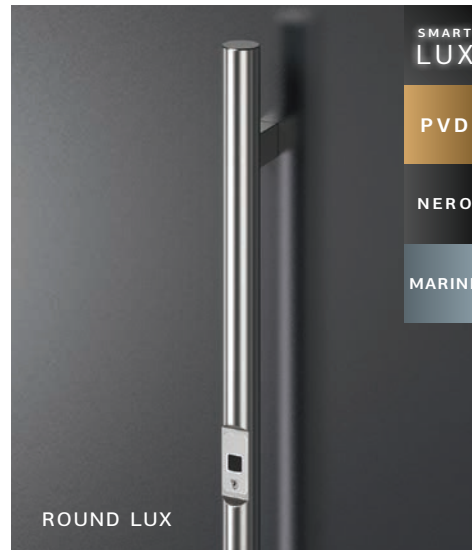


GERMAN
DESIGN
AWARD
SPECIAL
2019



LUX

Subtle ambient lighting from behind the pull handle evokes a sense of elegance, safety, and warmth at home.



LABELUX

Pirnar's patented technology allows your surname or any desired inscription to shine in the center of the pull handle, perfectly aligned with the surface.





MAGMALUX

Pirnar's patented technology allows you to illuminate the surface of the pull handle with a pattern of beautiful shapes that seamlessly aligns with the metal surface. The light engraving creates a playful and dynamic appearance for the pull handle and thus for the entire door set.



ROUND
MAGMALUX

ANGULAR
MAGMALUX



GERMAN
DESIGN
AWARD
SPECIAL
2019

CRYSTALUX

At the point where the hand touches the pull handle, a large, polished piece of crystal with beautiful shapes and reflections adds an extraordinary touch of glamour.



ROUND
CRYSTALUX

ANGULAR
CRYSTALUX

UPGRADE

ACCESSORIES

Enhance the appearance of your entrance doors with various decorative accessories.



CYLINDER PROTECTION PRIVILEGELUX

PrivilegeLux is an aesthetically refined protection for the cylinder and fingerprint reader against scratches and damage.

SMART
LUX

PVD

NERO

MARINE

SMART
LUX

PVD

NERO

MARINE

Protective trim 20 mm

SMART
LUX

PVD

NERO

MARINE

Protective trim 50 mm

SMART
LUX

PVD

NERO

MARINE

Protective trim 120 mm

PVD

NERO

MARINE

Cylinder protection

Digital peephole

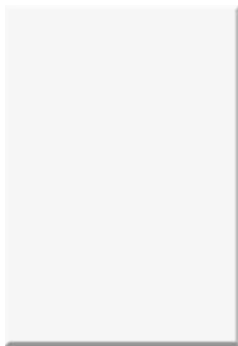
Peephole

COLOURS AND WOOD IMMITATIONS

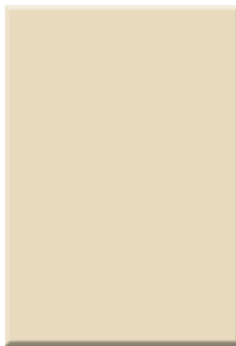
Choose from the most popular colours and imitations, or use the QR link to view the complete selection of a rich palette of standard or fine-structured colours and wood imitations.



ALU MATTE



White RAL 9016 matte



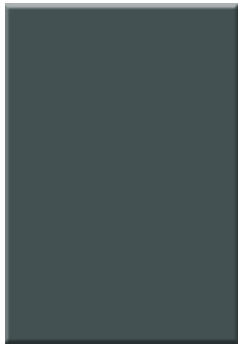
RAL 1013 matte



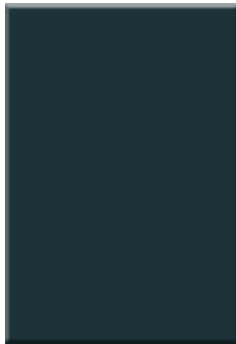
RAL 7040 matte



RAL 7004 matte



RAL 7012 matte



RAL 7016 matte



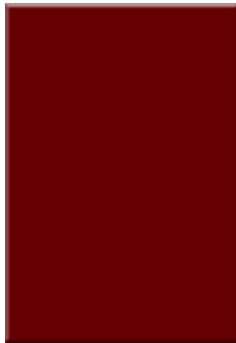
RAL 7021 matte



RAL 8016 matte



RAL 8019 matte



RAL 3004 matte



RAL 5002 matte



RAL 6005 matte



ALU METALLIC AND FINE-STRUCTURED

Fine-textured paints provide a stylish look, are more durable and scratch-resistant.



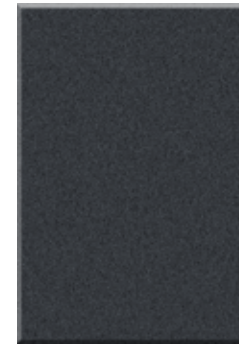
RAL 9006



90146



FS 9016



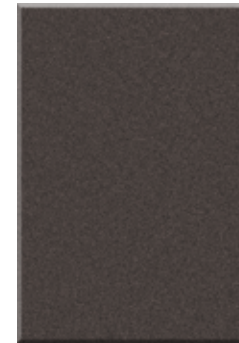
FS 7016



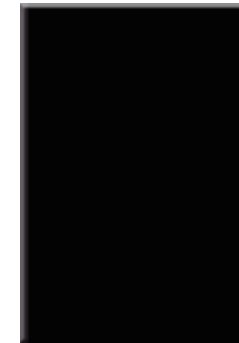
70105



70161



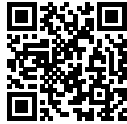
70784



FS 9005



FS 8019



WOOD IMITATIONS

Standard patterns run vertically in the imitation, except for the natural oak and twisted oak imitations, where patterns run horizontally. For more information and to view samples of wood imitations, please visit our showroom. The sample represents the wood imitation sizes of 100 x 140 cm.



RAL 9007



90147



DB 703 (80077)



FS 8016



FS 6005



FS 3004



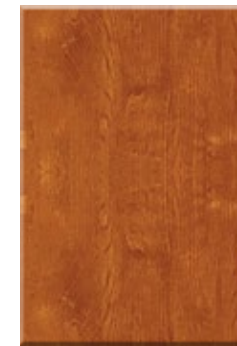
English oak



Rustic



Golden oak



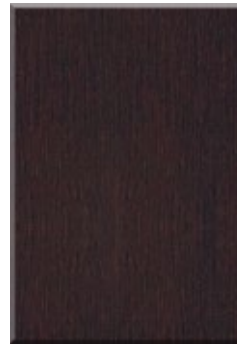
Oiled oak



Oak Winchester



Dark oak



Black oak



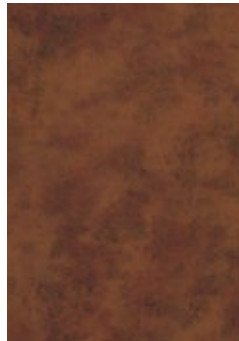
Cherry



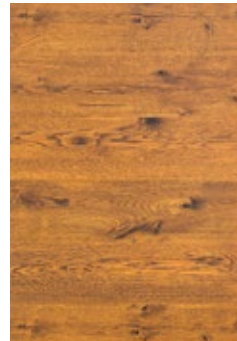
Vintage old dark wood



Concrete imitation



Corten



Natural oak

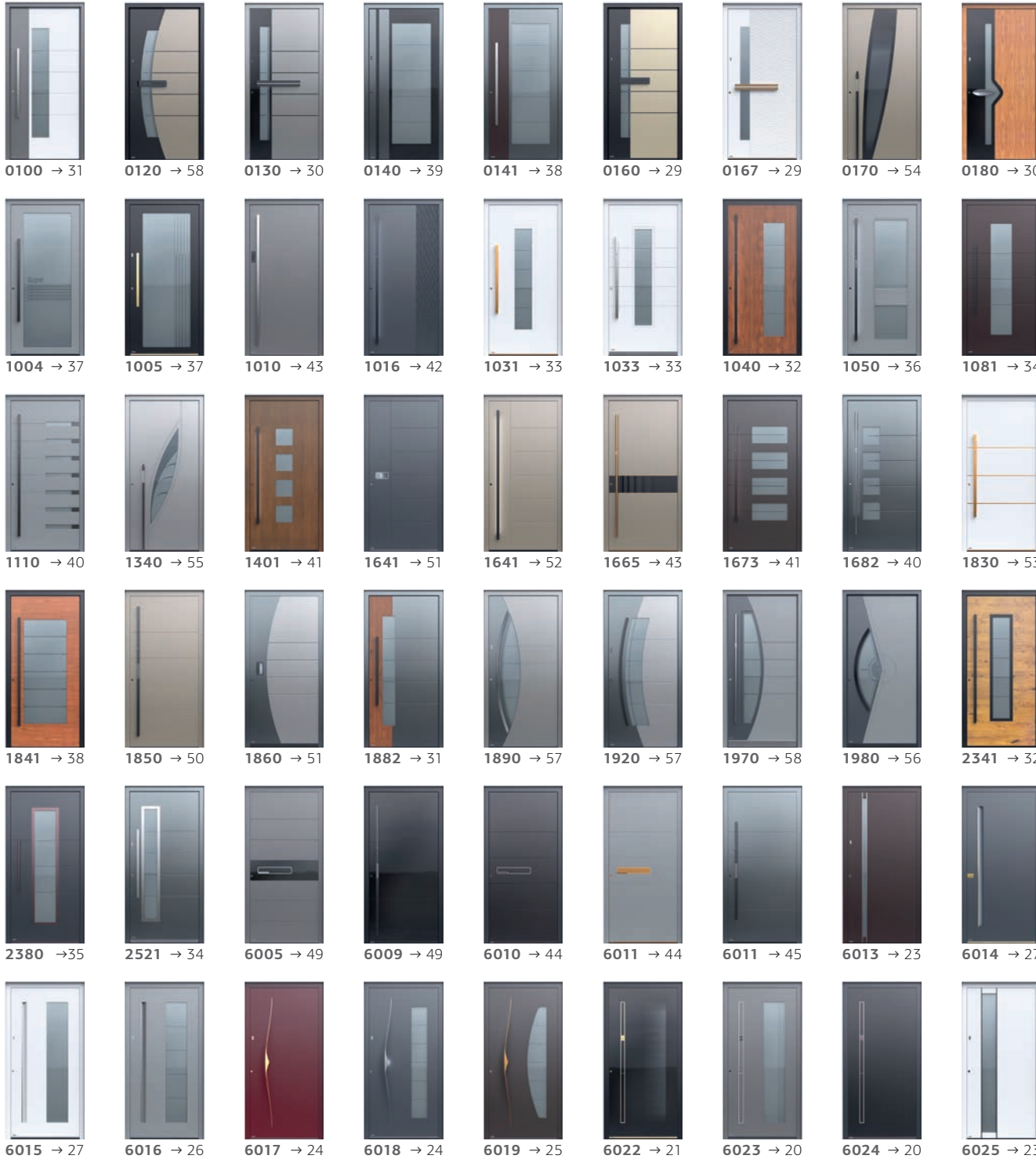


Twisted oak

**CUSTOM COLOUR
OPTIONS AVAILABLE.**



PREMIUM

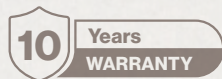


CLASSICO



WARRANTY

Pirnar aluminium entrance doors come with a 10-year warranty – a clear commitment to quality, durability, and a peace of mind. This extended cover protects your investment and reflects the outstanding performance of every Pirnar entrance door.



10 years:

- Door functionality
- The durability of the powder-coated aluminium surface of the doors, including resistance to cracking, peeling, and excessive fading of the coating under normal environmental conditions

5 years:

- For the airtightness of thermal insulating glass
- The visual consistency of the glass with the EN 1279:2018 standard

2 years:

- For issues pertaining to the performance of the door's built-in hardware (lock, cylinder, handle, self-closing mechanism, handles)
- For the performance of electronic components

The full warranty terms and conditions can be found at www.pirnar.co.uk.

Pirnar models are protected by copyright. We reserve the right to change prices, technical specifications, and equipment without prior notice. Due to technical printing reasons, variations in colour or glass may occur. Please verify colors according to the applicable RAL color chart. The painted surfaces of Pirnar doors are colourfast due to special treatment.

Edition 01/2025



PIRNAR.

Pirnar d.o.o.
Bravničarjeva ulica 20
SI-1000 Ljubljana, Slovenia
T +386 1 563 39 02
E sales@pirnar.si
www.pirnar.co.uk